

# **BLACKTOWN CITY**

# **98<sup>TH</sup>**

# **ANNUAL SHOW**

# **2022**

Blacktown Showground  
Saturday 12<sup>th</sup> March & Sunday 13<sup>th</sup> March 2022

Opening Times  
Saturday 9am to 10pm  
Sunday 9am to 4pm

Supported by  
Blacktown City Council  
[www.blacktownshow.com.au](http://www.blacktownshow.com.au)

## Index

Page

2. Index

3. Terms and conditions

4. Prizes and Contacts re entries

5-9. Cooking {cakes, jams, preserves etc}

10-14. Textiles and design {knitting, patchwork etc}

15-17. Art {oils, water, landscapes etc}

18, 31-33. Craft {pottery, woodwork, jewellery etc}

19-30. Entry forms

34-35. Photography

36. Blacktown Arts and Craft Group

37. Free Kids Activities

38-42. Horticulture {plants, roses, vegetables etc}

43. Birds

44-45. Ute Muster

46. Blacktown Show Society

47. Blacktown City Council

48. Thanks to Supporters

## **TERMS AND CONDITIONS OF ENTRY**

**All Exhibits:** Must be the original work of the exhibitor, completed within the last 12 months and must be ready for display.

**Entry Fee:** Seniors \$2 per entry and juniors \$1 per entry.

**Exhibits collection:** All exhibits must remain on display for the duration of the show, including items sold, and can only be picked up after 4pm Sunday, or Tuesday and Wednesday between 9am and 12pm at the Trevor Toms Pavilion.

**General Entries for: Art, Crafts, and Needlework** will be accepted on Monday 7th and Tuesday 18<sup>th</sup> March 2022 between 5pm and 8pm. The craft entries are to be taken to the Trevor Toms Pavilion, Artwork to the Pam Green Pavilion, Needlework to the Needlework Pavilion. Any item received soiled, damaged or washed (with the exception of spun or woven items) will not be accepted.

**Cooking Entries:** To be delivered to the Needlework Room between 8am and 10am on Friday 11<sup>th</sup> March 2022

**Horticulture entries by phone.**

**Entries are to be bought in via Kent St entry point.**

Only one pass will be issued to an exhibitor for five entries or more in any one Category.

Classes will only be judged and prizes awarded if there are 3 or more entries in the class. A judge may overrule this condition if the judge deems the entry to be of a high standard.

**Entries are to be bought in via Kent St entry point.**

**Entry Forms:** A copy of your entry form/forms must be retained by the exhibitor for collection of your exhibits.

**Prize Money:** Collection of prize money will only be issued after 4pm on Sunday.

**Exhibits:** All exhibit and entry forms must be marked either Not for Sale (NFS) or For Sale with the price clearly marked. A 10% commission will be charged on all sales.

**Judging:** Judges reserve the right to re-classify an entry with the judge's decision being final. No correspondence will be entered into.

**Security:** All reasonable care is taken to ensure no loss or damage to exhibits left in our care. However, no responsibility will be taken by the Blacktown City Show Society Inc. for any loss or damage to any exhibit.

### **PRIZES JUNIOR CATEGORIES**

1<sup>st</sup> place \$5.00

2<sup>nd</sup> place \$3.00

Place cards and ribbons will be awarded to 1<sup>st</sup>, 2<sup>nd</sup> and 3<sup>rd</sup>

A certificate is awarded for every junior entry.

BEST EXHIBITS \$25.00

All prizes kindly donated by Blacktown City Council.

### **PRIZES ADULT CATEGORIES**

1<sup>st</sup> place \$10.00

2<sup>nd</sup> place \$5.00

Place cards and ribbons will be awarded to 1<sup>st</sup>, 2<sup>nd</sup> and 3<sup>rd</sup>

BEST EXHIBITS \$50.00

All prizes kindly donated by Blacktown City Council.

### **Contacts**

{For enquiries regarding entries}

COOKING: Caroline 0403453707

TEXTILES: Caroline 0403453707

ART: Dawn 9654 0570 or 0402922659

POTTERY: Caroline 9624 4879 or 0403354162

CRAFT: Marty 0419297750 or KEITH 0401710201

HORTICULTURE: Veronica 0412776742

PHOTOGRAPHY: Bronwyn 0411546801

BIRDS: Greg 0419203237

Classes will only be judged and prizes awarded if there are 3 or more valid entries in a class. A judge may overrule this condition if the judge deems the entry to be of a high standard

## SECTION 1: COOKING - JUNIOR

### **Condition of entry**

1. Exhibit must be completed while attending school within the last 12 months with corresponding age on the entry form.
2. All jars and lids to have no advertising or brand names. Standard size jar is not less than 250 grams.

### Preserves, Jams, Jellies and Conserve

#### **Primary School**

#### **Secondary School**

#### **Class**

- |                               |                               |
|-------------------------------|-------------------------------|
| 1. Jam                        | 5. Jam                        |
| 2. Pickle/chutney/relish      | 6. Pickle/chutney/relish      |
| 3. Preserve                   | 7. Preserve                   |
| 4. Students with disabilities | 8. Students with disabilities |

### Junior Cakes

#### **Primary School**

#### **Secondary School**

#### **Class**

- |                                 |                                 |
|---------------------------------|---------------------------------|
| 9. Iced Packet Cake             | 18. Iced Packet Cake            |
| 10. Scones – Plate of 4         | 19. Scones – Plate of 4         |
| 11. Biscuits of own choice-6pcs | 20. Biscuits of own choice-6pcs |
| 12. Cup Cakes-iced-plate of 6   | 21. Cup Cakes-iced-plate of 6   |
| 13. Slice of own choice-6 pcs   | 22. Slice of own choice-6 pcs   |
| 14. Muffins – plate of 4        | 23. Muffins – plate of 4        |
| 15. Any cake iced & decorated   | 24. Any cake iced & decorated   |
| 16. Junior creation - moulding  | 25. Junior creation - moulding  |
| 17. Students with disabilities  | 26. Students with disabilities  |

### **5 Years and Under**

27. Decorated milk arrowroot oval biscuits or cupcakes
28. Three triangles of fairy bread
29. Students with disabilities

### **Blacktown Council Awards \$25.00**

**Best exhibit class 1-17**

**Best exhibit class 18-26**

**Best Exhibit class 27-29**

## SECTION 2: COOKING - ADULT

### Preserves, Jams, Jellies and Conserves

#### Condition of entry

1.Exhibits to be in standard jars not less than 250gms. All exhibits must be sealed correctly. Plain lids and jars only, no advertised.

#### PRESERVES

##### Class

- |                        |                              |
|------------------------|------------------------------|
| 30. Bottled fruits     | 40. Mustard Pickles          |
| 31. Bottled vegetables | 41. Fruit Butter             |
| 32. Berry Jam          | 42. Apple Jelly              |
| 33. Stone fruit Jam    | 43. Any Other Jam            |
| 34. Citrus Jam         | 44. Any Other Sauce          |
| 35. Marmalade          | 45. Any other sauce          |
| 38. Tomato Sauce       | 46. People with Disabilities |
| 39. Chutney/Relish     |                              |

#### Blacktown Council Awards

Best Exhibit 30- 46



## CAKES

### **Conditions of Entry**

No factory made or packet mixes will be allowed, nor will professional cooks or cake shop proprietors be eligible.

### **Class**

- |                                    |   |
|------------------------------------|---|
| 48. Marble Cake (iced)             | 58. Sultana Cake                                      |
| 49. Date and Walnut Loaf           | 59. Plain Sponge Sandwich (jam filling only)          |
| 50. Plain Scones (plate of 6)      | 60. Plum Pudding (steamed)                            |
| 51. Pumpkin Scones (plate of 6)    | 61. Rich Fruit Cake (un-iced)                         |
| 52. Damper                         | 62. Boiled Fruit Cake (un-iced)                       |
| 53. Pikelets (plate of 6)          | 63. Slice of Own Choice (6 pcs)                       |
| 54. Biscuits (plate of 6)          | 64. People with disabilities                          |
| 55. Patty Cakes (plate of 4)       | 65. ASC of NSW Rich Fruit Cake (see recipe next page) |
| 56. Banana Cake (top iced only)    |   |
| 57. Chocolate Cake (top iced only) |   |



## ASC Fruit cake

The following recipe is compulsory for entrants in class 64

### Rich Fruit Cake

#### Ingredients

250gm sultanas	1/3 cup sherry or brandy
250gm chopped raisins	250gm butter
250gm currants	½ tsp vanilla essence
125gm chopped mixed peel	½ tsp lemon essence
½ tsp ground ginger	½ tsp almond essence
90gm chopped red glace cherries	250gm soft brown sugar
250gm plain flour	4 large eggs
60gm self-raising flour	90gm chopped blanched almonds or
¼ tsp grated nutmeg	finely grated lemon rind
½ tsp ground cloves	

#### Here is what to do;

Mix together all the fruits and nuts and sprinkle with the sherry or brandy.

Cover and leave for at least one hour but preferably over-night.

Sift together the flours and spices.

Cream together the butter and the sugar with the essences.

Add the eggs one at a time, beating well after each addition, then, alternately add the fruit and the flour mixtures.

Mix thoroughly. The mixture should be stiff enough to support a wooden spoon.

Place the mixture into a prepared tin no larger than 20cm and bake in a slow oven for approx. 3-4 hours.

Allow to cool in the tin.

## ICING & DECORATING

### **Conditions of Entry**

Exhibitors are limited to one entry only in the following classes.

### **Class**

- 66. Wedding cake, no less than two tiers, iced and decorated.
- 67. Novelty cake, iced and decorated, not to be cut.
- 68. Special occasion cake, iced and decorated, not to be cut.
- 69. Novice, any cake iced and decorated, not to be cut. Open only to exhibitors who have not won a first, second or third prize in an icing or decorating section in any previous agricultural or cooking competition.
- 70. Presentation of sugar flowers
- 71. People with disabilities

### **Blacktown Council Awards \$50.00**

**Best exhibit class 30-47**

**Best exhibit class 48-64**

**Best Exhibit class 66-71**



### SECTION 3: TEXTILE & DESIGN - JUNIOR

#### **Condition of entry**

1. All exhibits must be entrants own work adult supervision is allowed.
2. For collection of entries after the show see page 3.

#### **Primary School**

##### **Class**

1. Any cultural article
2. Crochet/Knitted any article
3. Machine made article
4. Any handmade article
5. Any other creative design
6. Student with disabilities

#### **Secondary School**

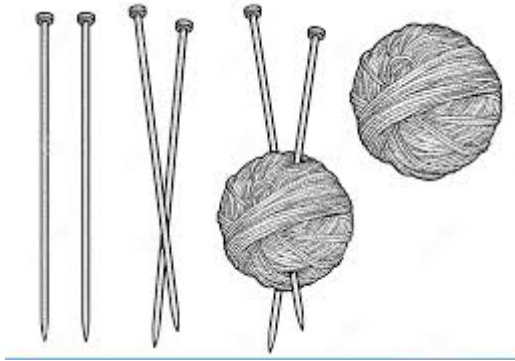
##### **Class**

7. Any cultural article
8. Crochet/Knitted any article
9. Machine made article
10. Any Handmade article
11. Any other creative design
12. Student with disabilities

#### **Blacktown Council Awards \$25.00**

**Best exhibit class 1-6**

**Best exhibit class 7-12**



## SECTION 4: TEXTILES & DESIGN - ADULT

### **Conditions of Entry**

1. "Beginner" is a person with not more than 12 months experience. Exhibits may be reclassified after entry.
2. For collection of entries after the show see page 3.

### NEEDLEWORK

#### **Class**

13. Patchwork - quilt hand pieced-hand quilted (e.g., paper pieced)
14. Patchwork - quilt machine pieced and quilted by entrant
15. Patchwork - machine appliqued quilt
16. Patchwork - hand appliqued quilt
17. Patchwork - wall hanging
18. Scrappy quilt - a quilt made from left-over fabrics
19. Patchwork - quilt professionally quilted
20. Patchwork - cushion, bag etc
21. Patchwork - any other article
22. Patchwork - beginner 12 months and under
23. Machine embroidery - any article
24. Hand Embroidery - any article
25. People with disabilities

### MISCELLANEOUS

#### **Class**

26. Tailored or fancy cushion-filled
27. Machine made - Adult/Child Garment
28. Tatting
29. Any other article
30. People with disabilities

## KNITTING - HAND

### **Class**

31. Any babywear (e.g., hat, bonnet, socks.)
32. Baby Garment (e.g., dress, overall, cardigan.)
33. Child's garment
34. Ladies/gents garment
35. Afghan, knee rug or throw-over.
36. Any other article, (e.g., homewares, cushion, cosy, rug, throws, toys, scarves, shawls, socks, hats.)
37. People with disabilities

## CROCHET

### **Class**

38. Baby's bonnet and booties, hats
39. Baby's dress, jumper or cardigan
40. Baby's 3-piece garment
41. Doyley, duchess set, runner
42. Napery - any article
43. Baby's shawl
44. Knee rug, afghan or throw
45. Adult garment
46. Child garment
47. Any other article not mentioned above e.g. toys, socks, hats, scarfs shawls
48. Homewares e.g. cushion, tea cosy, rug
49. People with disabilities

## KNITTING - MACHINE

### **Class**

50. Any article - baby wear.
51. Adult jumper or cardigan
52. Rug, shawl or scarf, no seams
53. Child's garment.
54. Any other article not mentioned above (e.g., rugs, throw over, no seams)
55. People with disabilities
56. **Wool article/garment state competition (see note and entry conditions below)**

**Note: Winner of wool article/garment at Blacktown Show 2020 will progress to group final, winner Group final will progress to Royal in 2021**

### **Conditions of entry for wool article/garment**

#### **Competition to be conducted at society, group and state level.**

1. Three different types of wool articles and/or garments.
  - Garment:** an item that can be worn e.g., dress, jacket, scarf, hat.
  - Article:** a utility item that is not worn but can be used at home e.g., blanket, bag for amusement, toy as a decoration, picture etc.
2. **Three different types:** the three items in an entry must differ from each other in terms of their construction and/or purpose.
  - EXAMPLE 1.** A knitted jumper, blanket and tea cosy.
  - EXAMPLE 2.** A knitted tea cosy, a crocheted tea cosy, a felted tea cosy.
  - EXAMPLE 3.** A knitted jumper, a knitted blanket and a crocheted blanket.
3. The **WHOLE** article and/or garment must be constructed of and contain a **minimum of 80% wool**.
4. A sample of yarn, fabric or fibre with label attached to each item making up the exhibit.
5. If label is not available as a hand spun/ felted, a hand written label with the relevant details and a sample will suffice.
6. An exhibit in this competition may consist of work of one individual or a group of individuals or an organization.
7. All three articles/garments must have been completed in the last 12 months and made by the exhibitor.
8. An exhibit, having won at the local show will be exhibited (i.e., the same three articles/garments) at the group final. The winning exhibit at the group level is then eligible to compete at State final.

9. An exhibit is only eligible to represent one society at group level and one group at state level.
10. An exhibit article/garment that has been previously competed at group level is not permitted to compete again.
11. If this class attracts no entries at a local show the Steward may, in consultation with the Judges, select three suitable individual exhibits and with the exhibitor's permission, enter them in the group final as an exhibit representing the particular society concerned.
12. It is the responsibility of the society secretary and winner to co-ordinate the transfer of the winning entry to the group final.
13. It is the responsibility of group secretary and winner to co-ordinate transfer of winning group entry to ASC office in Sydney for state judging.

### TAPESTRY (any size, no glass)

#### **Class**

57. Beginner's tapestry - completed within the last 12 months
58. Framed tapestry - any theme
59. Framed tapestry - petite point only, one thread
60. Creative tapestry - 2 or more stitches, 2 or more threads
61. Framed tapestry - long stitch
62. Any other article (e.g., stool, doorstep, etc.)
63. Bargello - geometric on canvas
64. Tapestry - continental
65. People with disabilities

#### **Blacktown Council Awards \$50.00**

**Best exhibit class 13-30**

**Best exhibit class 31-37**

**Best Exhibit class 38-49**

**Best exhibit class 50-55**

**Best exhibit class 57-65**

## SECTION 5: ART - JUNIOR

### **Conditions of Entry**

1. All exhibits must be suitably framed and ready for hanging with the name and address of the exhibitor on the back.
2. **Maximum size 60cmx 80cm.**
3. All entries must have been completed within the last 12 months.

### **Class**

1. Painting, drawing, any medium, Year 1-3
2. Aboriginal art, Year 1-3
3. Student with disabilities, Year 1-3
4. Painting, drawing, any medium, Year 4-6
5. Aboriginal Art, Year 4-6
6. Student with disabilities, Year 4-6
7. Drawing, painting any medium, Year 7-10
8. Aboriginal Art, Year 7-10
9. Student with disabilities, Year 7-10
10. Drawing, painting any medium, Year 11-12
11. Aboriginal Art, Year 11-12
12. Students with disabilities, Year 11-12

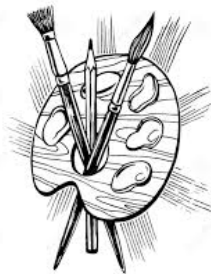
### **Blacktown Council Awards \$25.00**

**Best exhibit class 1-3**

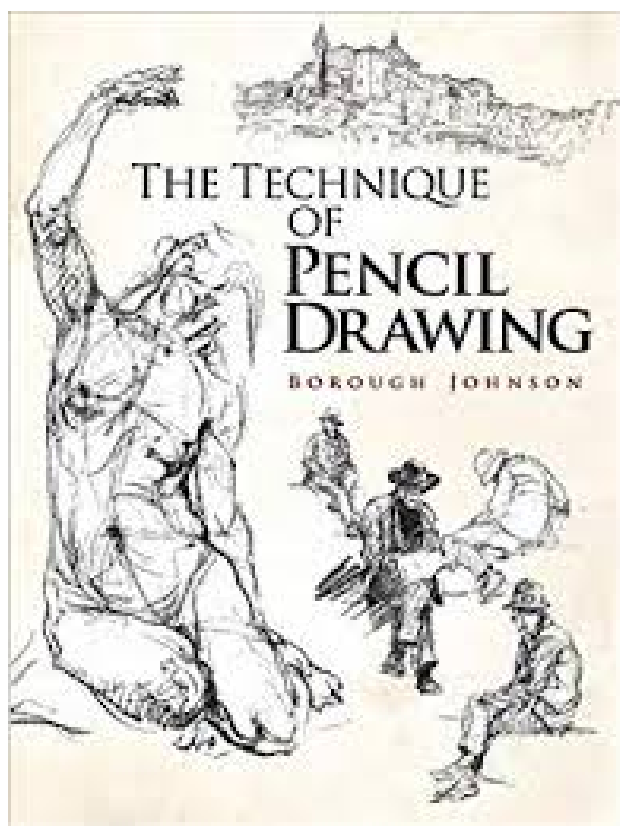
**Best exhibit class 4-6**

**Best exhibit class 7-9**

**Best exhibit class 10-12**







## **SECTION 6: ART - ADULT**

### **Conditions of Entry**

1. All exhibits must be suitably framed and ready for hanging with the name and address of the exhibitor on the back.
- 2. Maximum size 60cmx 80cm.**
3. All entries must have been completed within the last 12 months.
4. For collection of entries after the show see page 3.

### **Class**

13. Landscape, oil or acrylics
14. Landscape, any other medium
15. Still life, any medium
16. Seascape, any medium
17. Portrait, any medium
18. Abstract, any medium
19. Graphics - ink, pencil, chalks etc
20. Birds and animals, any medium
21. Water colour
22. Street scene, any medium
23. Mixed medium
24. Our Blacktown City, any medium
25. Indigenous Art
26. Any Other Genre
27. Adult with disabilities.

**Blacktown Council Awards \$50.00**

**Best exhibit class 13-27**

## **SECTION 7: CRAFT - JUNIOR**

### **Condition of entry**

1. All exhibits must be the entrants own work; adult supervision is allowed.
2. For collection of entries after the show see page 3.

### **Class**

1. Pottery - any article Year 1-3
2. Pottery - any article Year 4-6
3. Woodwork - any article Year 1-3
4. Woodwork - any article Year 4-6
5. Multi craft handmade item {paper} Year 1-3
6. Multi craft handmade item {paper} Year 4-6
7. Multi craft handmade item {wood} Year 1-3
8. Multi craft handmade item {wood} Year 4-6
9. Multi craft handmade item {metal} Year 1-3
10. Multi craft handmade item {metal} Year 4-6
11. Multi craft handmade item {fabric} Year 1-3
12. Multi craft handmade item {fabric} Year 4-6
13. Student with disabilities Year 1-3
14. Student with disabilities Year 4-6
15. Pottery - any article Year 7-10
16. Pottery - any article Year 11-12
17. Woodwork - any article Year 7-10
18. Woodwork - any article Year 11-12
19. Multi craft handmade item {paper} Year 7-10
20. Multi craft handmade item {paper} Year 11-12
21. Multi craft handmade item {wood} Year 7-10
22. Multi craft handmade item {wood} Year 11-12
23. Multi craft handmade item {metal} Year 7-10
24. Multi craft handmade item {metal} Year 11-12
25. Multi craft handmade item {fabric} Year 7-10
26. Multi craft handmade item {fabric} Year 11-12
27. Student with disabilities Year 7-10
28. Student with disabilities Year 11-12

### **Blacktown Council Awards \$25.00**

**Best exhibit class 1-14**

**Best exhibit class 15-28**

**Blacktown City Show Society Inc.**

**ENTRY FORM**

Entry forms **MUST** be completed in **DUPLICATE** and **BOTH** copies handed in with your exhibits at the time of entry.

Section	Class	Description of Exhibit	Entry Fee	Sale Price

**I hereby enter above, subject to the Rules and Regulations of the Society.  
Please Print**

**Title: Mr. Mrs. Miss (Please circle one)**

**Child Age: .....**

Name: .....

Address: .....

Post Code: ..... Date: .....

Phone No.....

Email.....



**Blacktown City Show Society Inc.**

**ENTRY FORM**

Entry forms **MUST** be completed in **DUPLICATE** and **BOTH** copies handed in with your exhibits at the time of entry.

Section	Class	Description of Exhibit	Entry Fee	Sale Price

**I hereby enter above, subject to the Rules and Regulations of the Society.  
Please Print**

**Title: Mr. Mrs. Miss (Please circle one)**

**Child Age: .....**

Name: .....

Address: .....

Post Code: ..... Date: .....

Phone No.....

Email.....



**Blacktown City Show Society Inc.**

**ENTRY FORM**

Entry forms **MUST** be completed in **DUPLICATE** and **BOTH** copies handed in with your exhibits at the time of entry.

Section	Class	Description of Exhibit	Entry Fee	Sale Price

**I hereby enter above, subject to the Rules and Regulations of the Society.  
Please Print**

**Title: Mr. Mrs. Miss (Please circle one)**

**Child Age: .....**

Name: .....

Address: .....

Post Code: ..... Date: .....

Phone No.....

Email.....





**Blacktown City Show Society Inc.**

**ENTRY FORM**

Entry forms **MUST** be completed in **DUPLICATE** and **BOTH** copies handed in with your exhibits at the time of entry.

Section	Class	Description of Exhibit	Entry Fee	Sale Price

**I hereby enter above, subject to the Rules and Regulations of the Society.  
Please Print**

**Title: Mr. Mrs. Miss (Please circle one)**

**Child Age: .....**

Name: .....

Address: .....

Post Code: ..... Date: .....

Phone No.....

Email.....



**Blacktown City Show Society Inc.**

**ENTRY FORM**

Entry forms **MUST** be completed in **DUPLICATE** and **BOTH** copies handed in with your exhibits at the time of entry.

Section	Class	Description of Exhibit	Entry Fee	Sale Price

**I hereby enter above, subject to the Rules and Regulations of the Society.  
Please Print**

**Title: Mr. Mrs. Miss (Please circle one)**

**Child Age: .....**

Name: .....

Address: .....

Post Code: ..... Date: .....

Phone No.....

Email.....



**Blacktown City Show Society Inc.**

**ENTRY FORM**

Entry forms **MUST** be completed in **DUPLICATE** and **BOTH** copies handed in with your exhibits at the time of entry.

Section	Class	Description of Exhibit	Entry Fee	Sale Price

**I hereby enter above, subject to the Rules and Regulations of the Society.  
Please Print**

**Title: Mr. Mrs. Miss (Please circle one)**

**Child Age: .....**

Name: .....

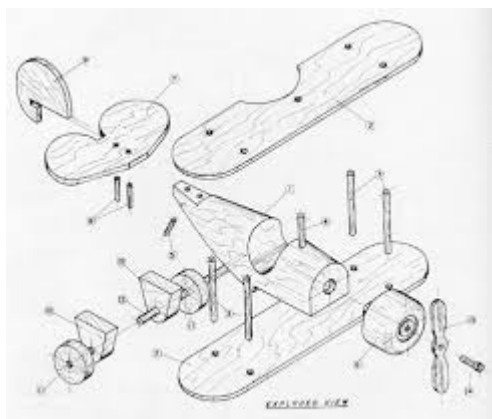
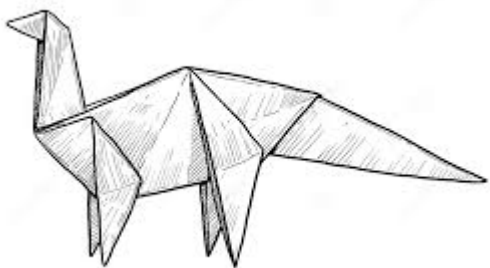
Address: .....

Post Code: ..... Date: .....

Phone No.....

Email.....







## SECTION 8: CRAFT - ADULT

### Conditions of Entry

1. Exhibit must be all entrants own work and completed in last 12 month
2. For collection of entries after the show see page 3.

### Class

29. Pottery wheel thrown - beginner.
30. Pottery wheel thrown - over 12 months experience.
31. Adult garment, knitted or crocheted, made entirely of hand spun yarn.  
Attach a 15cm piece of yarn.
32. Any article made from hand woven or hand spun yarn (e.g. fashion accessory).
33. Specimen of hand spun yarn, not less than 100gms. State purpose.
34. Hand painted porcelain.
35. Folk Art - beginner.
36. Folk Art – advanced.
37. Bead Work.
38. Silk Painting - framed art
39. Silk painting - mounted, not framed.
40. Silk Painting - wearable article.
41. Lapidary - any item.
42. Indigenous craft.
43. multi-craft - any handmade item - Paper.
44. multi-craft - any handmade item - Metal.
45. multi-craft - any handmade item - Wood.
46. multi-craft - any handmade item - Fabric.
47. People with disabilities.

### **Blacktown Council Awards \$50.00**

**Best exhibit class 29**

**Best exhibit class 30**

**Best exhibit class 31-33**

**Best exhibit class 34**

**Best exhibit class 35-36**

**Best exhibit class 37**

**Best exhibit class 38-40**

**Best exhibit class 41**

**Best exhibit class 42**

**Best exhibit class 43-46**

**Best exhibit class 47**

## Woodwork competitions – Adult Craft Classes 48-5

*All entries must have been completed within last 18 months unless stated.*

### Class

48 Wood Turning - Novice turned Article -Novice must not have entered competitions before.

49. Wood Turning - Open Turned Bowl, Turned lidded box Turned Platter, segmented turned bowls, Laminated Bowls: - Manufactured or pre-laminated timber not acceptable

50. Woodturning - Spindle work, wooden Walking stick, Pens & Pencils: -Pens or Pencils that are substantially turned from either wood or acrylic material. Pens or pencils may have bands or other features made of wood, metals (non-ferrous or ferrous), acrylic or other materials. The pen or pencil must be capable of producing writing.

51. Wood Work - Carving Any Article Free Form. Carved wooden Walking stick Entry must have been Carved and completed in the last 24 months

52. Woodwork - Non turned Wooden Box or Laminated platter/cutting board, clocks.

53. Wood Turning Ornamental - turned Bowls, spindle, Platters

54. Wood Work - Band saw Box or Scroll saw work, Clocks

55. Wood Work - Wooden toy, or any wooden article **not** included in above classes.

56. Woodwork - People with disabilities

All forms of woodwork accepted

### Blacktown Council Awards \$50.00

**Best exhibit class 48**

**Best exhibit class 49**

**Best exhibit class 50**

**Best exhibit class 51**

**Best exhibit class 52**

**Best exhibit class 53**

**Best exhibit class 54**

**Best exhibit class 55**

**Best exhibit class 56**

**Best exhibit class 56**



## **Section 9: PHOTOGRAPHY – AMATEUR - JUNIOR**

### **Conditions of entry**

1. All photographs to be taken by the exhibitor
2. All exhibits should be mounted on cardboard and ready to hang
3. Maximum of 5 entries per class
4. Minimum size including mount 12.5cm x 17.5cm
5. Maximum size including mount 40cm x 50cm
6. For collection of entries after the show see page 3.

### **Primary Class**

1. Print “open” - monochrome
2. Landscape/Seascape - monochrome
3. Portrait - monochrome
4. Print “open” - colour
5. Landscape/Seascape - colour
6. Portrait- colour
7. Print “nature” - colour
8. Digitally manipulated prints
9. Student with disabilities

### **Secondary Class**

10. Print “open” - monochrome
11. Landscape/Seascape - monochrome
12. Portrait - monochrome
13. Print “open” - colour
14. Landscape/Seascape - colour
15. Portrait - colour
16. Print “nature” - colour
17. Digitally manipulated prints
18. Student with disabilities

**Blacktown Council Awards \$25.00**

**Best exhibit class 1-3 and class 10-12**

**Best exhibit class 4-7 and class 13-16**

**Best exhibit class 8 and class 17**

**Best exhibit class 9 and class 18**



## **Section 10: PHOTOGRAPHY – AMATEUR - ADULT**

### **Conditions of entry**

1. All photographs to be taken by the exhibitor
2. All exhibits should be mounted on cardboard and ready to hang
3. Maximum of 5 entries per class
4. Minimum size including mount 12.5cm x 17.5cm
5. Maximum size including mount 40cm x 50cm
6. For collection of entries after the show see page 3.

### **Class**

19. Print “open” - monochrome
20. Landscape/Seascape - monochrome
21. Portrait - monochrome
22. Print “open” - colour
23. Landscape/Seascape - colour
24. Portrait - colour
25. Print “nature” - colour
26. Digitally manipulated prints
27. People with disabilities

**Blacktown Council Awards \$50.00**

**Best exhibit class 19-21**

**Best exhibit class 22-25**

**Best exhibit class 26**

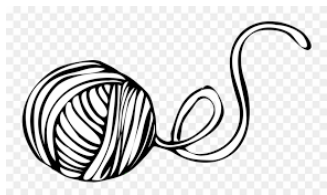
**Best exhibit class 27**



# Blacktown Art and Craft Group Inc.

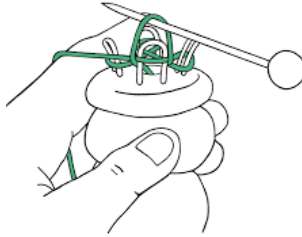
“The Trevor Toms Pavilion”  
Blacktown Showground  
Entry via Kent Street  
Phone 96227589  
PO Box 364 Blacktown NSW 2148

**Come and join one of our friendly groups.  
Incorporating the following interest art, silk painting, pottery,  
mixed media, crochet, knitting, quilting and patchwork.**



## FREE CRAFT ACTIVITIES FOR KIDS

Children can learn and create a variety of crafts



Peg dolls, Beading, Make a pom-pom, French knitting  
Decorate a note pad to give as a gift to mum or dad

**Enter our paint colour and or decorate a House**



Template brushes and paint provided.

Paint your rooster leave it to dry and be judged.

First place in preschool, primary and secondary levels \$10.00 prize.

**Prizes donated From Blacktown Arts and Craft Group.**

Roosters judged 2pm Sunday and winners contacted.

All roosters can be collected after judging or collected on Tuesday, or Wednesday  
9am to 12 pm from Trevor Toms Pavilion.

## **Section 11: HORTICULTURE - JUNIOR**

### **Conditions of entry**

1. All exhibits to be staged by 8.30 am.
2. Exhibition containers supplied for cut flowers only. All cut flowers become the property of the society.
3. All exhibits must be grown by entrant. Fruit and vegetables must be in a carton and suitably labelled.
4. All fruit and vegetables must be cut by entrant prior to display.
5. Entries judged by RAS rules.
6. Junior preschool to age 12.
7. Secondary 13 to 18 years.
8. ENTRIES BY PHONE

### **Making animals and things from fruit and/or vegetables**

#### **Class**

1. 5 years and under
2. 6-12 years
3. 13-18 years

### **Primary - Plants in containers**

#### **Class**

4. One pot flowering plant
5. One pot foliage plant
6. Collection of 3 different succulents in individual pots or containers
7. Collection of 3 different cacti in individual pots or containers
8. One cut flower in vase or container
9. One vase or container with 3 different flowering shrub or berry
10. Any seasonal fruit collection of 3
11. Any seasonal vegetable collection of 3
12. Any arrangement in any container type
13. Children with Disabilities

### **Secondary – Plants in containers**

#### **Class**

14. One pot flowering plant
15. One pot foliage plant
16. Collection of 3 different succulents in individual pots or containers



17. Collection of 3 different cacti in individual pots or containers
18. One cut flower in vase or container
19. One vase or container with 3 different flowering shrub or berry
20. Any seasonal fruit collection of 3
21. Any seasonal vegetable collection of 3
22. Any arrangement in any container type
23. Children with a disability

### **School exhibits**

#### **Class**

24. Any display of seasonal fruits, vegetables or flowers {Primary}
25. Any display of seasonal fruits, vegetables or flowers {Secondary}

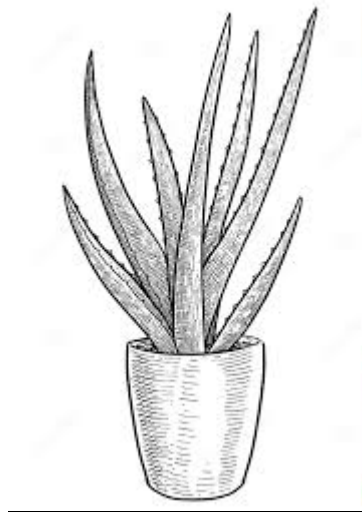
### **Blacktown Council Awards \$25.00**

#### **Best exhibit class 1-3**

#### **Best exhibit class 4-13**

#### **Best Exhibit class 14-23**

#### **Best exhibit class 24-25**



## SECTION 12: HORTICULTURE - ADULT

### Conditions of entry

1. All exhibits to be staged by 8.30 am.
2. Exhibition containers supplied for cut flowers only. All cut flowers become the property of the society.
3. All exhibits must be grown by entrant. Fruit and vegetables must be in a carton and suitably labelled.
4. All fruit and vegetables must be cut by entrant prior to display.
5. Entries judged by RAS rules.
6. ENTRIES BY PHONE

### DAHLIAS

#### Class

26. Any display

### ROSES

#### Class

27. Blacktown Rose Championship consists of:
- 3 Exhibition Roses, Distinct
  - 1 Vase of Bunch Roses,
  - 3 Stems, same variety,
- and any 1 of the following:**
- 1 Vase Floribunda consisting of 1-6 stems, or
  - 1 Vase Floribunda consisting of 10-25 florets, or
  - Bud to full bloom 4 stages, or
  - Vase of decorative roses, 3 stems same variety

**NOTE: Class 27 awarded Rose Championship Ribbon**

- 28. 3 Exhibition Roses, Distinct
- 29. 3 Exhibition Roses, Any Color
- 30. 1 Exhibition Rose
- 31. 1 Vase Decorative Roses, three cuts, 1 cultivar
- 32. 1 Vase Roses, 'Bud to Full Bloom', 4 stages, bud to show color
- 33. 1 Vase Roses, Floribunda, 1 to 6 cuts
- 34. Standard Unit, any other type
- 35. 1 Vase Roses, Miniature, 3 cuts, 1, 2 or 3 cultivars

## **MISCELLANEOUS FLOWERS**

### **Class**

- 36. 1 Vase of flower/s, 3 blooms or cuts, NND
- 37. 1 Vase of flower/s, 1 bloom or cut.

## **PLANTS IN CONTAINERS NOT EXCEEDING 250mm**

Foliage not to exceed 40cm diameter

### **Class**

- 38. 1 container of Fern or Ferns
- 39. 1 container of Foliage Plant or Plants
- 40. 1 container of Flowering Plant or Plants
- 41. Collection of 3 to 6 Cacti in Individual Pots
- 42. Collection of 3 to 6 Succulents in Individual Pots

## **FLORAL DESIGN (Width 16"-41cm, Height 21"-54cm)**

### **Class**

- 43. Float bowl
- 44. Any festive arrangement
- 45. Reflection in a mirror
- 46. Any other floral arrangement
- 47. Modern arrangement with branches or foliage
- 48. Basket arrangement
- 49. Any Native floral/foilage arrangement

## **ORCHIDS**

### **Class**

- 50 Any Variety

## **FRUIT and VEGETABLES and HERBS**

### **Class**

- 51. Any seasonal vegetable, collection of 3
- 52. Collection of three different herbs in single container
- 53. People with disabilities

**Blacktown Council Awards \$50.00**

**Best exhibit class 26**

**Best exhibit class 27 – Rose Championship Ribbon**

**Best exhibit class 28-35**

**Best exhibit class 36-37**

**Best exhibit class 38-42**

**Best Exhibit class 43-49**

**Best Exhibit class 50**

**Best Exhibit class 51-53**



**Do you have a beautiful pet bird?**

**Enter it at the show  
Competition Saturday only  
Adult and Junior sections  
All enquires and entries to Greg  
on 0419203237**



## UTE MUSTER

**Admission: \$10 for Vehicle & Driver including 1<sup>st</sup> Category  
Each additional category \$5**

### **CATAGORIES**

Best Work Ute

Best Feral Ute

Best B & S Style Ute

Best Chicks Street (registration papers required)

Best Chicks Rural/Country

Best Vintage/Classic Ute

Best 4WD Ute

Best Holden Ute

Best Ford Ute

Best Street Ute

Best Town Ute

Best Rural Ute

Best Other (not Holden or Ford)

Best Theme

Ute with a Boot

Best Overall (Promoters Choice) open to all vehicles (no charge)

**All Enquiries to Trevor & Wilma Drower Phone: 02 9837 2437**

**Mobile: 0419 442 052 or 0418 644 815**

**Email: [cindylee@iprimus.com.au](mailto:cindylee@iprimus.com.au)**



# **BLACKTOWN SHOW SOCIETY**

Play a part in your community and join us at the Blacktown City Show Society Inc.

We meet on the 4<sup>th</sup> Monday of each month at 7:30pm in the Old Dining Room Hall, Blacktown Showground, Richmond Rd, Blacktown, entry via Kent St.

## **All Enquiries To:**

Mobile: 0421 626 898

Show Office: 86058713

Email: [blacktownshow@hotmail.com](mailto:blacktownshow@hotmail.com)

Website: [www.blacktownshow.com.au](http://www.blacktownshow.com.au)



# **BLACKTOWN CITY COUNCIL**

## **SUPPORTING LOCAL ENDEAVOURS IN THE ARTS**

## **BRINGING OUR COMMUNITY TOGETHER**

62 Flushcombe Road  
Blacktown NSW 2148  
Phone: 9839 6000  
[www.blacktown.nsw.gov.au](http://www.blacktown.nsw.gov.au)

**Blacktown City Show Society Inc. would like to thank  
all volunteers, stewards and judges including:**

**BLACKTOWN CITY COUNCIL  
PHONE: 98396000**

**BLACKTOWN SHOW SOCIETY  
SHOWGROUNDS 9621 4626  
WILMA 04211626898**

**BLACKTOWN ARTS AND CRAFTS GROUP INC.  
MOBILE: 0419 297 750  
PHONE: 96227589**

**CUMBERLAND WOODWORKERS INC.  
WWW.CWWINC.ORG**

**TREND TIMBERS  
PHONE: 45775277**

**TIMBERBITS  
PHONE: 97883383**

**INNER WHEEL  
PHONE: 0481187782**

**ROTARY CLUB BLACKTOWN  
PHONE: 0418 418 722**



